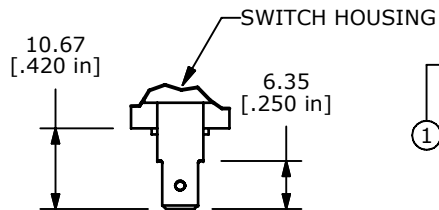
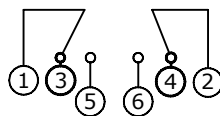


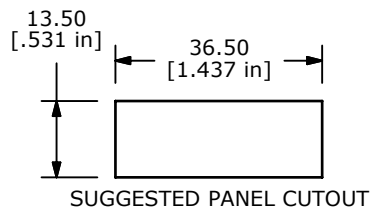
CONSTRUCTION DETAIL  
TERMS: 3, 4, 5, 6



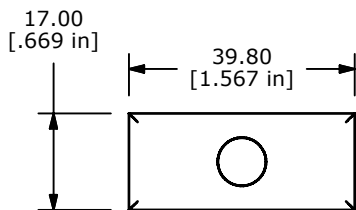
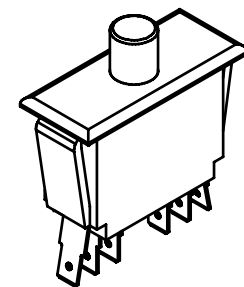
CONSTRUCTION DETAIL  
TERMS: 1 & 2



SCHEMATIC



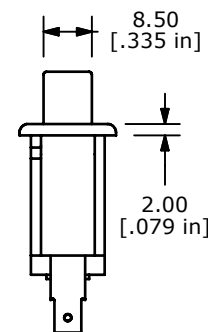
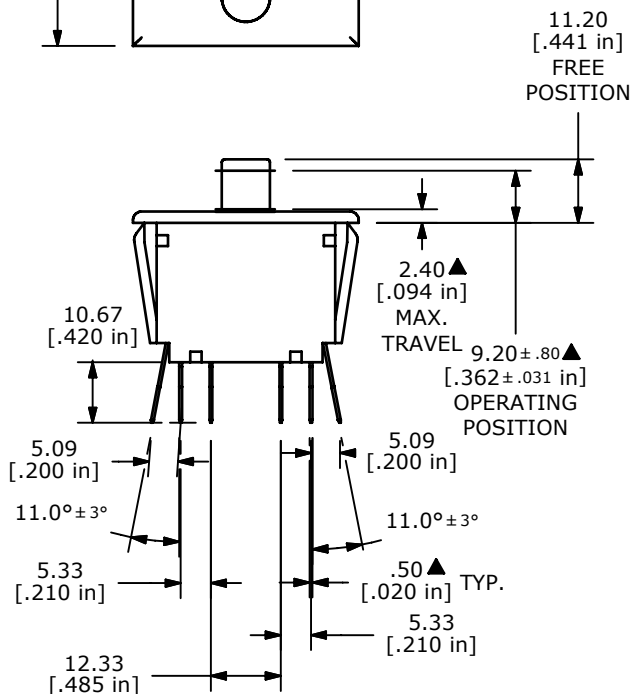
SUGGESTED PANEL CUTOUT



SWITCH FUNCTION	
POS. 1	POS. 2
ON	(ON)
1-3, 4-2	1-5, 6-2

(ON)=MOMENTARY

- NOTES:
1. ALL DIMENSIONS IN MM
  2. GENERAL TOLERANCE: X.X=±0.4  
X.XX=±0.25
  3. TERM. NOS. FOR REFERENCE ONLY
  4. ELECTRICAL LIFE: 6,000 CYCLES
  5. OPERATING TEMP: 0°C TO 85°C
  6. CONTACT RESISTANCE: 10mΩ MAX. INITIAL
  7. 2002/95/EC (ROHS) COMPLIANT
  8. CONTACT RATING:  
UL APPROVED: 10R(4)A 277VAC 5E4
  9. PLASTIC COLOR: WHITE (BODY AND ACTUATOR)
  10. ▲ DENOTES CRITICAL PARAMETER



TITLE PP2-7H1-2D2

A	20670	RELEASE FOR PRODUCTION	7/11/12	rc
REV	PCR NO	DESCRIPTION	DATE	BY

SCALE	DATE	DR	DWG	REV
3/4:1	7/10/2012	rc	34-PP27H12D2	A

THE INFORMATION CONTAINED IN THIS DOCUMENT IS PROPRIETARY TO E-SWITCH AND IS NOT TO BE COPIED OR TRANSFERRED